

# "A Shoebox of QSL Cards: Memories of Solar Cycle 19".

John Gilbert, VE3CXL  
QCWA Chapter 70  
May 15, 2018

Shoebboxes full of QSL cards.....



VE3CXL's recollections, told through his QSL card collection, of operating VE8OW from 1956-58 at Eureka, NU on Ellesmere Island

With a Postscript on Solar cycle 21 : March 1976 to September 1986.

Major operating in Ottawa was around 1979.

The maximum smoothed sunspot number was 232.9, in December 1979.

### **Solar Cycle 19**

The nineteenth solar cycle since 1755. It lasted 10.5 years, from April 1954 to October 1964. The International Geophysical Year occurred at its peak. The maximum smoothed sunspot number was 285.0, in March 1958 (the highest on record).

### **Solar Cycle 21**

Also lasted 10.5 years, from March 1976 to September 1986.  
The maximum smoothed sunspot number was 232.9, in December 1979.

### **Solar Cycle 24**

(the current solar cycle) began January 4, 2008 to mid-2018  
On track to have the lowest recorded sunspot activity.

Sunspot activity has a major effect on the shortwave bands  
High levels of sunspot activity lead to improved signal propagation on higher frequencies.

## Getting Started in Amateur Radio

- 1953 – Catching the bug!
- 1954 – Brantford ARC Ham Class
- Practicing “Best bent wire tree”.
- 1955 – On the air as VE3BOH
- 1956 – Operating VE8MB and VE8MA
- 1956-58 – VE8OW

Tom Hunter, VE3CP  
 ARRL SCM  
 President of the  
 Brantford Amateur  
 Radio Club 1954-56



Operator <b>JOHN A. GILBERT</b>	RADIO VE3BCY This confirms our <u>QSO</u> of <u>JUNE 27 1955</u> at	Address <b>70 Park Avenue Brantford Ontario</b>
<b>VE3BDH</b>		
UR <u>7.0</u> Mc. Sigs. RST <u>599 + +</u>		XMITTER <u>BC 459A</u>
Remarks		RVR. <u>11.55</u> ANT. <u>Windom</u>
PSE - QSL - TNX		

*Brantford, Ontario, Canada*  
 5 ECHO VILLA AVE.

**VE3BCY**

Radio VE3BDH Thanks for QSO of July 9/55.....  
 at 2340.....S.T. Ur. CW 7 mc. sigs RST 589.....  
 Rcvr. NC-125..... Xmtr. Single 813..... 3.30 Watts  
 Ant. Windom..... Remx TNX..... F.B. QSO John.....  
 .. Cal..... TNX QSL 335 Opr: W. Lorne Edmondson  
Lorne

**VE3DZR**

28-9-58  
1914  
589  
Long wave  
S. 40k  
Brantford County

V. L. HOGARTH

VE3BOH, Brantford, 1955



Command Set BC458 Tx  
 SX-43 Receiver  
 ( also R 1155 Receiver)



From the log of

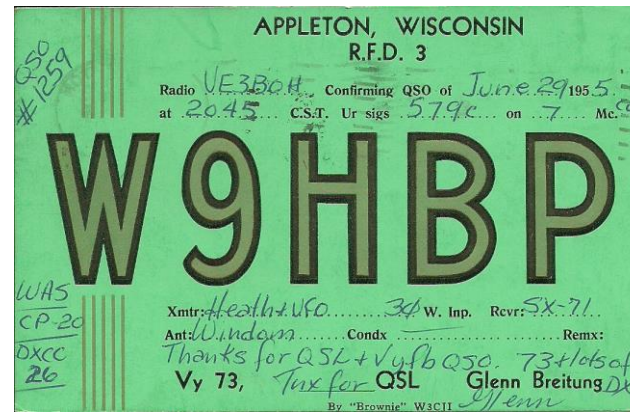
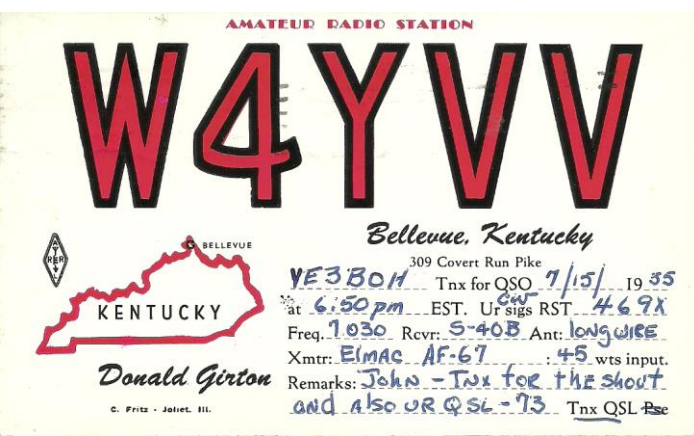
VE3EAM  
 Bert Mdligan,  
 81 Mayfield Ave.,  
 Toronto, Canada.

Confirming Oct. 10/55  
 QSO of

DATE TIME	STATION CALLED	CALLED BY	HIS FREQ. OR DIAL	HIS SIGNALS RST	MY SIGNALS RST	FREQ. MC.	EMIS- SION TYPE	POWER INPUT WATTS	TIME OF ENDING QSO
2150 EST	VE3BOH		7 mc	579			CW	100	2155

E.C. O.R.S. W.A.S.  
 Best for 56  
 Best

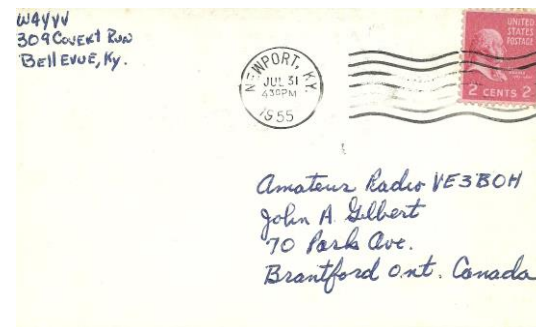
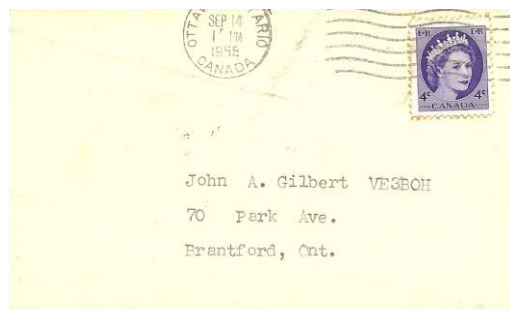
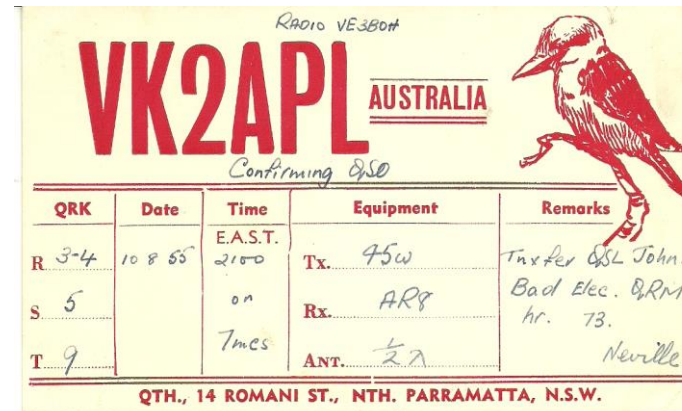
General Electric Tube Dept. Form 73A  
 (Log Form Courtesy of A.R.R.L.—Made in U.S.A.)



SSB Multiphase Exciter 20-A

### Characteristics of the Amateur bands in 1955

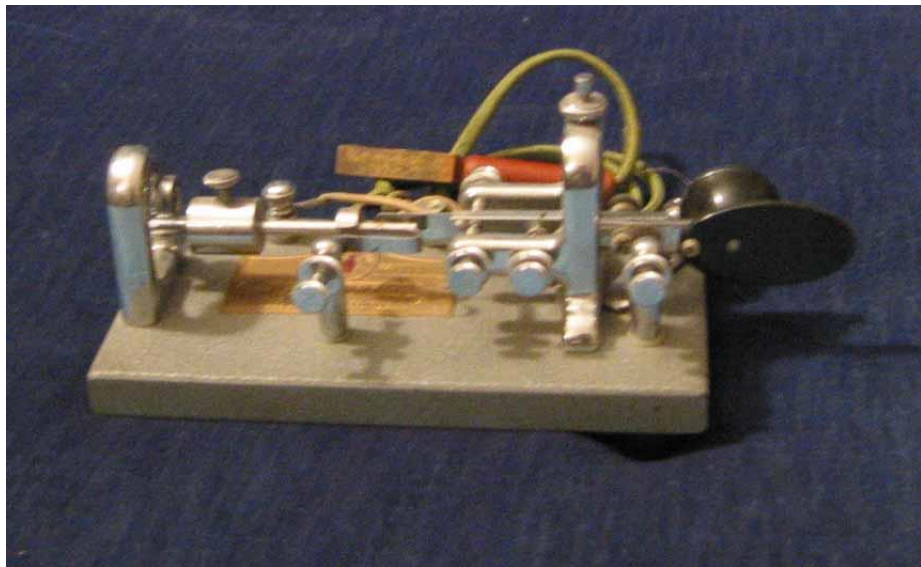
- Lots of war surplus equipment;
- Chirps, clicks and drifting;
- SSB only for the wealthy;
- Still lots of crystal controlled rigs;
- US novice bands;
- Excellent propagation worldwide;
- Soviet stations sent "WSEM" (BCEM) but would not reply;
- "Windom" antennas used widely.



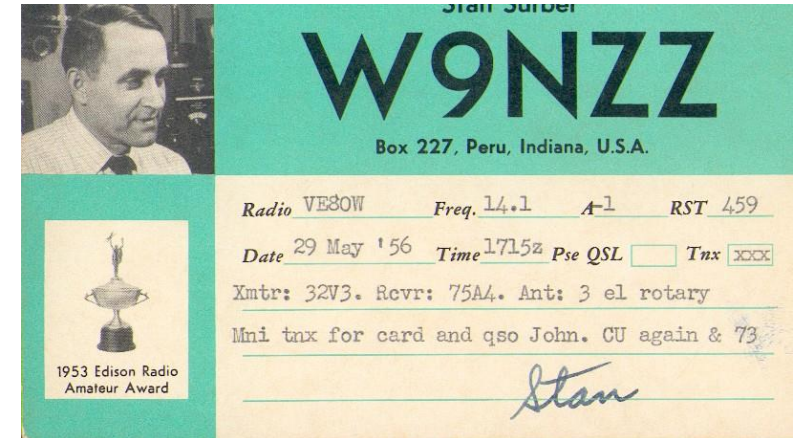
Loren Windom 1905-88



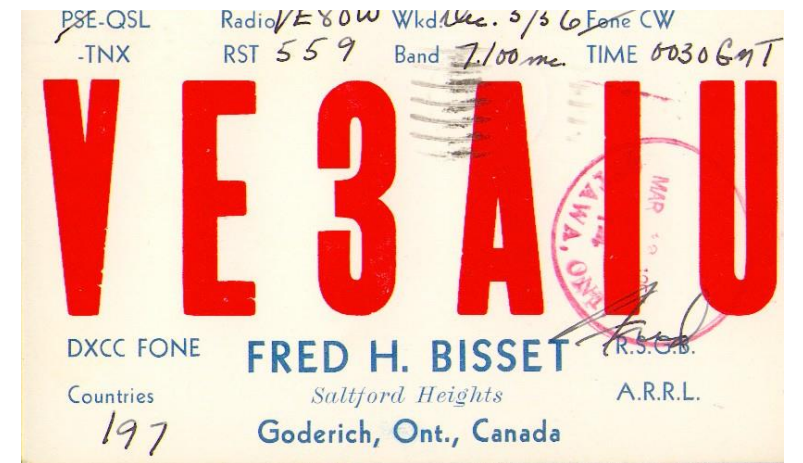




VE8-land 1956-58



Collins  
 32V3 Transmitter  
 51J3 Receiver  
 "MonKey"  
 "Vee" Beams





Упол-6

**UPOL-7** To Radio *Ye 80w*

Ur cw/phone sigs RST *599* on *7* mc

on *16 dec 1957* at *19.20* MSK

TX INPUT *20* WTTS *dipole* ANT *20 mtr*

*Super 9* TUBES

731 OP *Baranov*

Use ur Qsl via post box *80*  
Moscow, USSR.

APR 7 1958  
QSL BUREAU  
L.J. PADAY, VE1FO  
123 HENRY STREET  
HALIFAX, N.S.

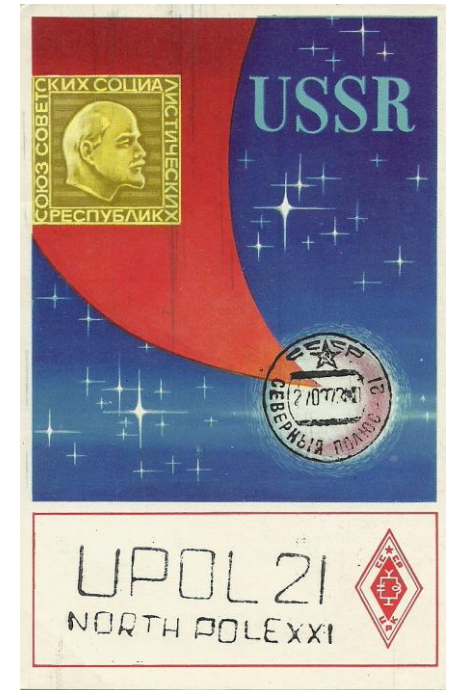
QSL BUREAU  
123 HENRY STREET  
HALIFAX, N.S.

---

СССР. Новый советский реактивный самолет «ТУ-104», вмещающий 50 пассажиров. Самолет летает на высоте 10–11 км со скоростью 800 км в час.

URSS. Nouvel avion-fusée du type «TU-104» pour 50 passagers. Son plafond est de 10–11 km et sa vitesse de vol – 800 km/h.

USSR. «TU-104», a new Soviet jet aircraft, accommodating 50 passengers. Its speed is 800 km per hour and it flies at the height of 10–11 thousand metres.



1972

ICE ISLAND  
**T-3**

A Project of the International Geophysical Year

This is to certify that Amateur Radio Station KG1DT confirms communication of **15 MARCH 1957** at **0035** Hours GMT with Radio **VE80W**

Your 3.8 Mc FONE Signals RST 5/9

Transmitter ART-13 Input 90 Watts.

Receiver BC-348 Antenna LONG WIRE

Remarks: GUESS THIS IS A LITTLE OVERDUE JOHN.

SORRY WE DONT HAVE ANY QSL CARDS AS YET.

RADIO

**KG1DT**

Our location on 10 MARCH 57 was 82.44N 97.00W

Ice Island T-3 is a large piece of very thick ice drifting in the ARCTIC OCEAN. Its dimensions are about 10 miles long and  $4\frac{1}{2}$  miles wide. The island is about 140 to 160 feet thick. It has been forming in the Arctic Ocean for a thousand years or so, probably as part of a much larger ice "shelf" which extends out to sea north of Canada's Ellesmere Island. It broke off and became a floating island perhaps as recently as 1935.

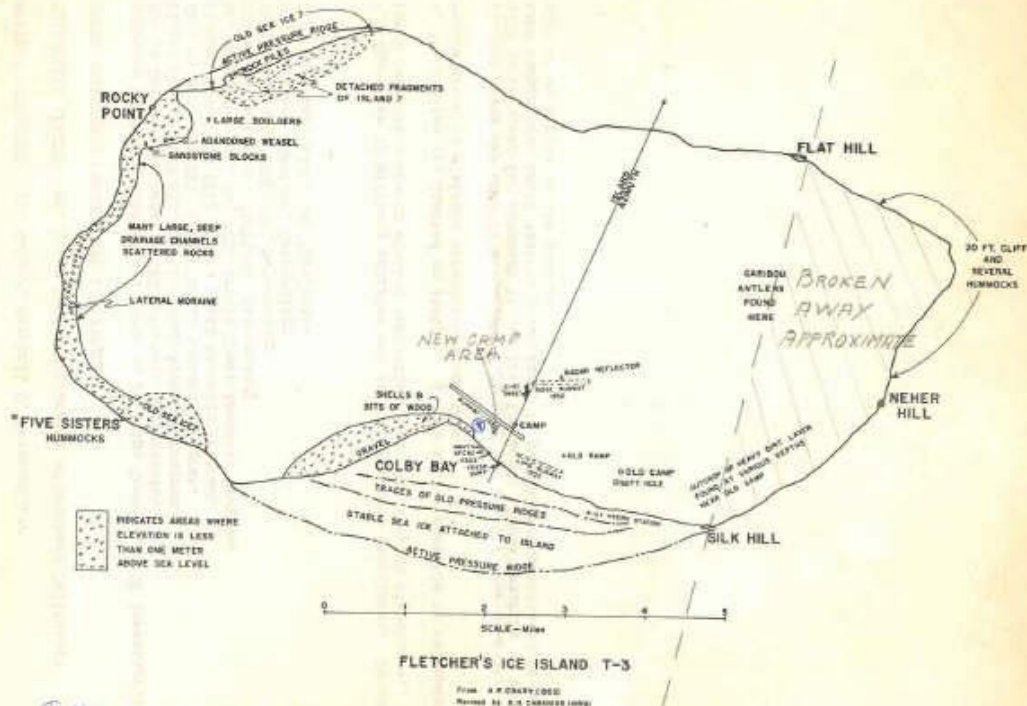
Since the island was positively identified in 1950, it has traveled a predictable course as it drifts with the ocean current, traveling in a clockwise direction around the Arctic Ocean at an average speed of 1.2 miles per day. The island was first occupied by Col. Joseph Fletcher, USAF, in March 1952 and thus derives its original name, "FLETCHER'S ISLAND".

The USAF has established and will maintain a scientific station on T-3 for a period of 18 months beginning June 1, 1957. The station complement of 20 persons will include 10 Air Force Support personnel and 10 scientists from the National Academy of Sciences, the Air Force Cambridge Research Center, and the U. S. Weather Bureau.

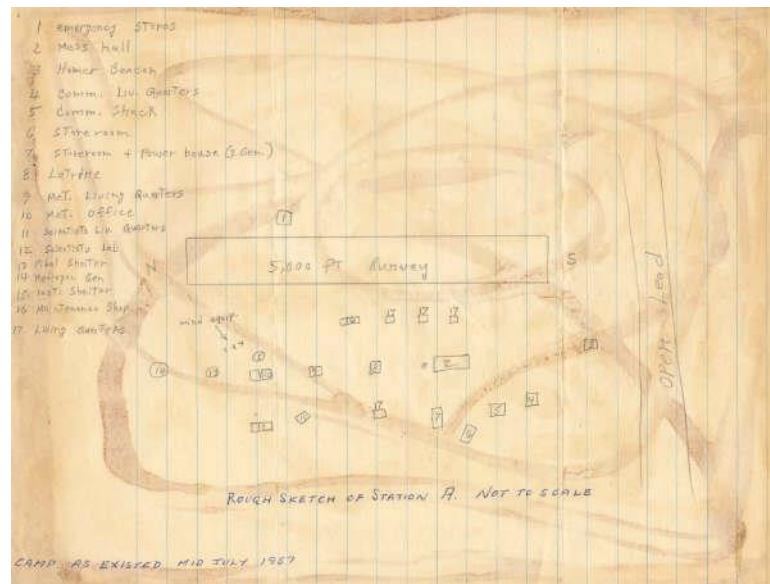
QSL Direct to: **KG1DT**  
Ice Island T-3  
APO 23, New York, N.Y.

Operator NICK, K2MRF

Official: Willie Knutsen  
Major, USAF  
Commander, T-3



① Hole drilled thru ice  
114 FEET DEPTH  
July-1952



ROUGH SKETCH OF STATION A. NOT TO SCALE

CAMP AS EXISTED MID JULY 1957

DATE TIME	STN/CLD	CLD BY	HIS FREQ	HIS RT	MY RT	FREQ	TYPE	PWR
<u>Feb 6/57</u>								
X 0015	CQ	G5BD	7009	589	579	7009	A1	110
X 0040	x	SM5BUX	7007	579	569	7007	A1	110
X 0106	CQ	W6MOJ	7002	569	569	7002	A1	110
X 0240	VE2LI	X	7008	579	579	7008	A1	110
X 0513	4x4CJ	X	7007	569	569	7007	A1	110
✓ 0530	x	SM7AAZ	7009	579	569	7009	A1	110
X 0620	x	SP3PL	7011	579	579	7011	A1	110
X 0650	OKIMB	X	7004	569	559	7004	A1	110
X 0705	W6MOJ	X	7002	579	579	7002	A1	110
✓ 1040	X	VE8OP/b	14063	589	599	14063	A1	110
X 1050	VE8TD	X	7008	599	599	7008	A1	110
X 1500	X	W6DFY	7007	559	569	7007	A1	110
X 1510	X	W7HKT	7007	579	579	7007	A1	110
X 1520	x	SM5CXF	7007	579	569	7007	A1	110
X 1530	x	LAILEF	7008	569	559	7008	A1	110
✓ 1550	JABZU	X	7004	569	369	7004	A1	110

<u>Feb 7/57</u>								
X 0315	VE3PB	X	7017	599	599	7017	A1	110
✓ 0340	X	OH3UQ	7017	578	589	7017	A1	110
X 0520	W2VFN	X	7000	579	579	7000	A1	110
X 0550	W2VFN	X	7000	579	579	7000	A1	110

TIME	STN	CLD	CLD BY	HIS ORG	HIS PST	MYRST	ORG	TYPE	PWR	END
26 ✓ 1443	DL3ZT	X		28386	5/6	5/5	28386	A3	A1	1448
✓ 1528	CO		DL9PF	21050	598	569	21050	A1	A1	1530
✓ 1534	W7YG	X		14030	569	569	14030	A1	110	1538
✓ 1538	X		SM5BVF	14030	579	579	14030	A1	110	1544
X 1545	X		SM5CXF	14030	579	579	14030	A1	110	1600
✓ 1744	VK6AS	X		14084	579	479	14084	A1	110	1752
27 ✓ 1415	5A5TL	X		28220	5/9	5/9	28210	A3	110	1428
✓ 1438	X		G8UG	28226	5/8	5/2	28210	A3	110	143
✓ 1435	X		G3BYM	28220	5/7	5/7	28210	A3	110	1439
✓ 1439	X		G3CDE	28220	5/7	5/8	28210	A3	110	1442
✓ 1507	G3IMV	X		28350	5/9	5/9	28350	A3	110	1510
✓ 1515	G3HYH	X		28216	5/9	5/9	28216	A3	110	1535
✓ 1515	X		ZS1AX	28216	3/5	3/3	28216	A3	110	1535
✓ 1558	DL9SN	X		28362	5/9	5/9	28362	A3	110	1600
✓ 1716	X		G8RS	28216	5/9	5/9	28216	A3	110	1728
✓ 1820	CT/OR	X		28407	5/10	5/6	28407	A3	110	1826
✓ 1826	X		VE6WK	28407	5/9	5/9	28407	A3	110	1830
✓ 1850	OQ5BQ	X		14078	579	579	14078	A1	110	1904
28 ✓ 1131	CO		G31OR	28376	5/9	5/9	28376	A1	110	1155
✓ 1143	X		G3OQE	28376	5/9	5/9	28376	A1	110	1155
✓ 1325	JABAA	X		14159	5/9	5/9	14159	A1	110	1330
✓ 1417	K6DON	X		21228	599	5/9	21228	A1	110	1423
✓ 1424	VE3FW	X		21229	5/9	5/9	21229	A1	110	1431
✓ 2250	LX1DE	X		14196	4/7	4/7	14196	A1	110	2255
✓ 2313	CX1AK	X		26350	5/8	5/7	28350	A1	110	2322
✓ 2320	X		W3SPZ	28480	5/9	5/9	28553	A1	110	2325
✓ 2330	VE3BQT	X		28300	5/9	5/9	28300	A1	110	2349



**VP 8 CI**

WEDDELL  
SEA

HALLEY  
BAY

Royal  
Society  
Base

75° 31' S 26° 36' W

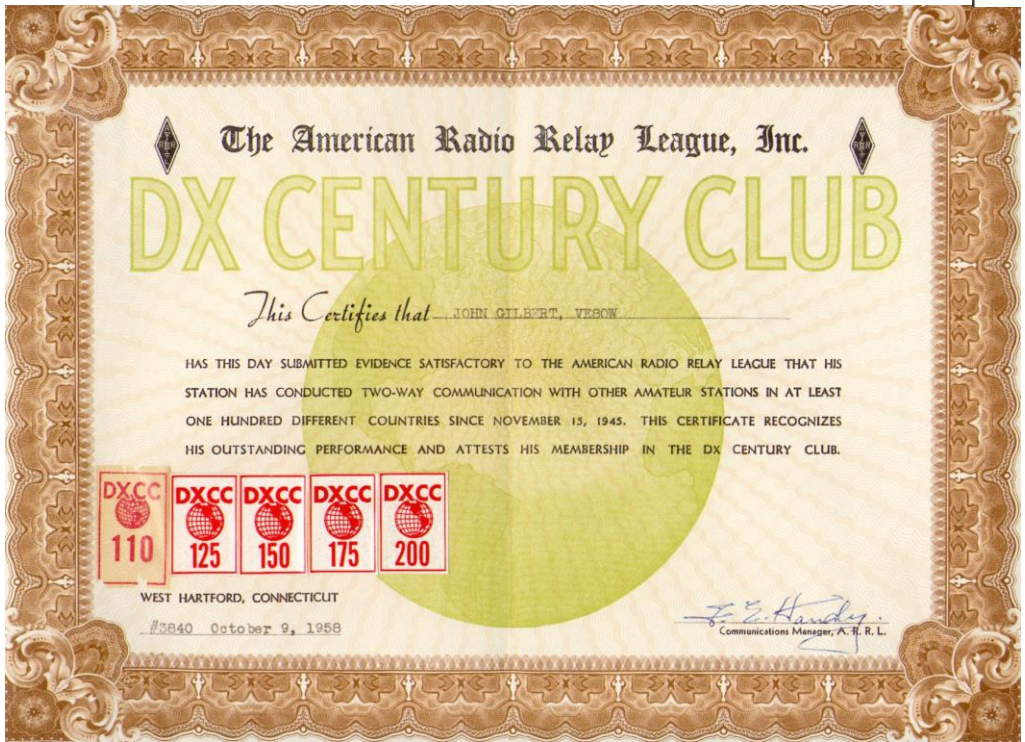
0 1 2 3 4 5  
miles



To Radio Station VE 8 OW  
 Confirming QSO on 19/3/57 at \_\_\_\_\_ GMT.  
 on \_\_\_\_\_ mtrs Bnd. QRG \_\_\_\_\_ Kcs.  
 Ur Sigs R. 5 S. 7 T 9 CW.  
 Q \_\_\_\_\_ S \_\_\_\_\_ Fone \_\_\_\_\_

Tx Redifon C40  
 Rx GEC BRT400E  
 Ant Rhombic  
 Input Watts 500

Mod \_\_\_\_\_  
 Remarks Heard PSE QSL ~~via~~ RSGB / Tnx QSL  
 Best 73 \_\_\_\_\_ Opr. \_\_\_\_\_  
 Royal Society Base, Halley Bay, established 6 January 1956, is the principal  
 British scientific base in Antarctica for the International Geophysical Year  
 1957-58





FIRST HAWAIIAN WAZ WAS DXCC

# KH6IJ

KA2IJ AP2IJ 3D2IJ K6CGK K1PND KG6SZ

Thanks for our recent contact and your QSL

KATASHI NOSE  
4207 Huanui St.  
Honolulu, Hawaii  
U.S.A. 96816

Extra Class License #5, April 1952

1915-1994

LOS ANGELES COUNTY



Photo: Courtesy QST.



# W6AM

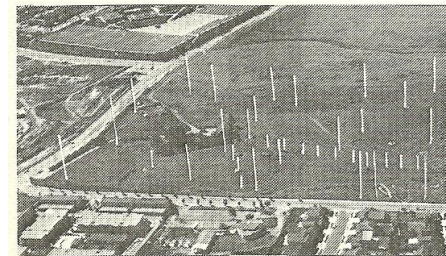
The Wallace Radio Ranch and Rhombic Farm, is 10 miles from Long Beach, the W6AM residence, and 20 miles from downtown Los Angeles, on a 1200 Foot hill, on a peninsula, overlooking the Pacific Ocean, 2 miles away.

Transmitters: Collins 325-3, Henry 2K  
Receivers: Collins 755-3A, 755-3C, 755-3, 51J  
362 Countries confirmed, #1 DXCC, WAC charter member, WAZ CW and Phone, WACE #1.

*VE3CXL June 25, 1980  
1352 gnt 599 - 21 wchz*

*73 DM*

**Don C. Wallace W6AM**  
28503 Highridge Rd.  
Rancho Palos Verdes, California U. S. A. 90274



W6AM has farmed your QTH of the Month for thirty years, raising a fine crop of rhombics on Palos Verdes peninsula. Firing in eighteen directions, nine diamonds fill the 24-acre plot on poles as high as 140 feet. Don's beam tracks here is just as impressive, enough size-of-the-art equipment to keep W6AM battling for top spot on ARRL's DX Century Club Honor Roll. Somehow the Wallaces still find time to keep up their own Long Beach dip ten miles away. (W6AMH W6TCG photo) QST- September 1976 79

1898-1985. QCWA Member

METCALFE, ONT., CANADA

Rural Route 3

# VE3QA

Confirming Qs

HAL E. PARSONS

1901-1996 QCWA Member

**ST. THOMAS, VIRGIN ISLANDS U.S.A., BOX 403**

DXCC • FOC

DX EDITOR CQ MAGAZINE

EX-K4AA '27-41

# KV4AA

TO RADIO *YE3BOH*  
CONFIRMING OUR CW  
RADIO CONTACT OF

ON 1.8-3.5-7-  
*14-21-27-28* MCS  
AT

Your Card Rec'd  
Thanks and *73's*

AST  
GMT

DICK SPENCELEY

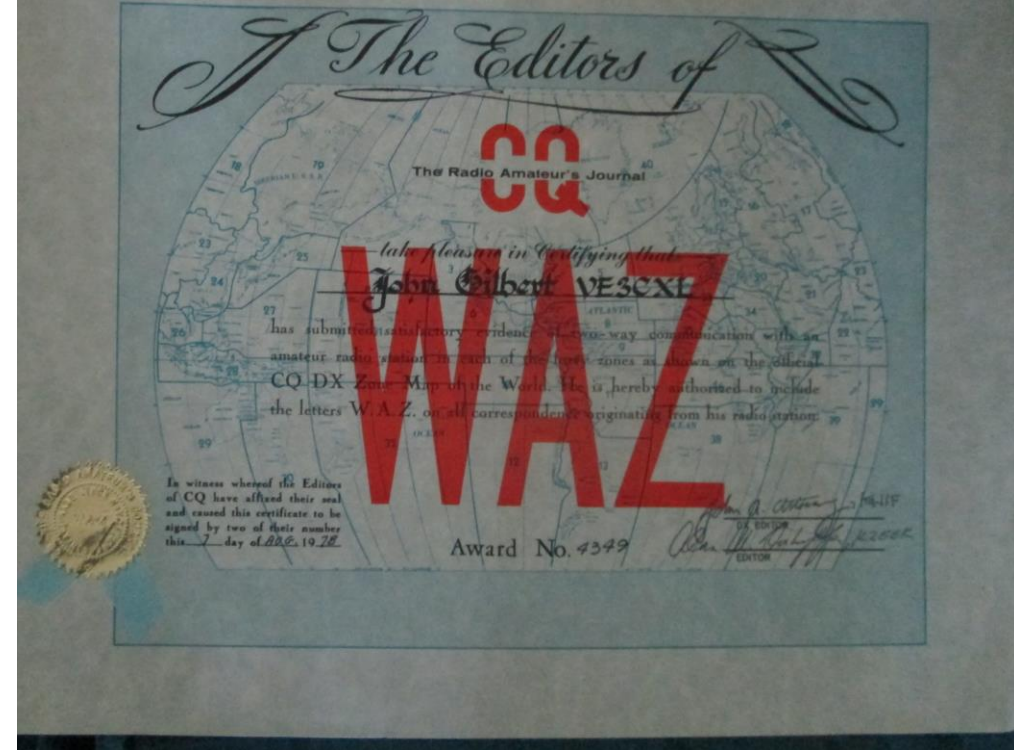
*0715* YOUR TIME

*589*

1905-1982



VE3CXL Ottawa 1977-82



73

&

THANK YOU!